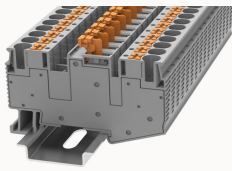


Overview

Product information



DS6-MT-11040000205

Disconnect terminal blocks, connector method: Push-in connector, Rated voltage : 500 V, Rated current : 20 A, Number of connectors: 2, Number of potentials: 1, Cross section: 0.2 mm² - 10 mm², AWG: 20 - 8, Width: 8.2 mm, Color: gray, Mounting type: NS35/7.5, NS35/15

Product advantages

- Disconnect terminal blocks.
- Push-in connection technology, tool-free operation, more convenient and faster;
- With orange wire button, one word or cross screwdriver can release wire.
- The circuit can be disconnected, measured, controlled easily by operate the knife disconnecter.
- Equipped with test holes on both sides of the breaking point, convenient for testing the circuit.
- Snap-on knife disconnecter to prevent accidental disconnection.
- Universal breaking area to achieve different functions, can insert breaking plug, component plug, fuse plug.

Product certification



Technical data

Product drawing

3D model

□

IEC Electrical parameters

Rated current (III / 3)

20A

UL Electrical parameters

Rated voltage

300V

Rated current

20A

Wiring data

Conductor cross section flexible (ferrule without plastic sleeve)

0.5-6mm²

Conductor cross section flexible (ferrule with plastic sleeve)	0.5-6mm ²
2 flexible conductors with a TWIN ferrule	0.5-2.5mm ²
Strip length	10~12mm
Conductor cross section solid	0.5~10mm ²
Conductor cross section flexible	0.5~6mm ²
Conductor cross section solid AWG	20~8

Environmental conditions

Ambient temperature (storage / transport)	-25°C~60°C
Ambient temperature (operation)	-40 °C ~ 105 °C (depending on derating curve)
Relative humidity (storage/transport)	25%~75%

IEC Electrical parameters

Rated voltage (III / 3)	500V
Rated surge voltage	6KV

Safety test

Anti-finger touch	Passed the test
-------------------	-----------------

Mechanical performance test

Mechanical strength	Passed the test
Fixing support	Passed the test
Rotational Pull Test	Passed the test

Environmental protection

REACH SVHC	Lead 7439-92-1
RoHS	No excessive harmful substances

Electrical performance test

Voltage drop	≤3.2mV
--------------	--------

Temperature rise test	≤45 K
-----------------------	-------

Dimension

NS 35/7,5 Height	43.5mm
End plate width	/
NS 35/15 Height	51mm
length	74.2mm
width	8.2mm
Height	36mm

Overview

Insulating material group	I
standard test	IEC60947-7-1
Connection type	In line connection
Number of rows	1
number of connections	2
Open-end side panels	no
Insulation Materials	PA
Flame retardant grade, in line with UL 94	V0

Accessories

Marker

Top marker	ZSF8
Side marker	ZSF8
Marker support	/

Accessories

Slotted screwdriver size (Blade thickness x Width) mm	0.8x4
---	-------

Bridge	DFBXX-8.2
End cover	/

Installation

End clamp	E-WS N / E-PC-1100A
Terminal strip marker support	KLM3-20x8 / KLM3-44x8 / DBE-1 / DBE-2
DIN rail	NS35/7.5-1000-00A(H)

Business data

Order number	11040000205
Packing unit	50
Minimum order quantity	50
Products weight (without packaging)	21.02