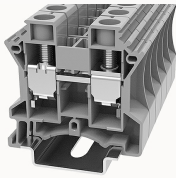


## Overview

### Product information



## DC16-11020000012

Screw type Din-Rail TB, connector method: Screw/plug-in connector, Rated voltage: 1000 V, Rated current: 76 A, Number of connectors: 2, Number of potentials: 1, Cross section: 1.5 mm<sup>2</sup> - 25 mm<sup>2</sup>, AWG: 14 - 3, Width: 12 mm, Color: gray, Mounting type: NS 35/7.5, NS 35/15

### Product advantages

- Steel screw connection technology, reliable connection;
- Equipped with dual-channel bridge wells, circuit connection testing is more flexible;
- Unique plug-in bridge, high circuit connection efficiency;
- The box has a baffle to prevent mis-insertion;
- Can be matched with marker strips to avoid incorrect insertion of wires.

### Product certification



## Technical data

### Product drawing

### 3D model

□

### Overview

Number of rows	1
number of connections	2
Open-end side panels	Yes
Insulation Materials	PA
Flame retardant grade, in line with UL 94	V0
Insulating material group	I
standard test	IEC60947-7-1

Connection method	screw connection
-------------------	------------------

#### Dimension

width	12mm
End plate width	1.5mm
Height	49.4mm
NS 35/7,5 Height	50.9mm
NS 35/15 Height	58.4mm
length	50.25mm

#### Wiring data

Strip length	12mm
Conductor cross section solid AWG	14~3
Conductor cross section solid	1.5~25mm <sup>2</sup>
Conductor cross section flexible	1.5~25mm <sup>2</sup>
Conductor cross section flexible (ferrule without plastic sleeve)	1-16mm <sup>2</sup>
Conductor cross section flexible (ferrule with plastic sleeve)	1-16mm <sup>2</sup>
2 flexible conductors with a TWIN ferrule	0.75-6mm <sup>2</sup>
Screw type	Slotted screw
screw thread	M5
Tightening torque	2.5N.m

#### IEC Electrical parameters

Rated voltage (III / 3)	1000V
Rated current (III / 3)	76A
Rated surge voltage	8KV

#### UL Electrical parameters

Rated voltage	600V
Rated current	100A

#### Environmental conditions

Ambient temperature (operation)	-40 °C ~ 105 °C (depending on derating curve)
Relative humidity (storage/transport)	25%~75%
Ambient temperature (storage / transport)	-25°C~60°C

#### Mechanical performance test

Mechanical strength	Passed the test
Fixing support	Passed the test
Rotational Pull Test	Passed the test

#### Electrical performance test

Voltage drop	≤3.2mV
Temperature rise test	≤45 K

#### Safety test

Anti-finger touch	Passed the test
-------------------	-----------------

#### Environmental protection

RoHS	No excessive harmful substances
REACH SVHC	Lead 7439-92-1

#### Accessories

##### Marker

Top marker	/
Side marker	ZT12
Marker support	/

##### Accessories

Slotted screwdriver size (Blade thickness x Width)	1×6.5
Bridge	DFA16
End cover	D-DC16
Partition plate	/

#### Installation

End clamp	E-WS N / E-PC-1100A
Terminal strip marker support	KLM3-20x8 / KLM3-44x8 / DLM2 / DBE-1 / DBE-2
DIN rail	NS35/7.5 & NS35/15

#### Marking & Installation

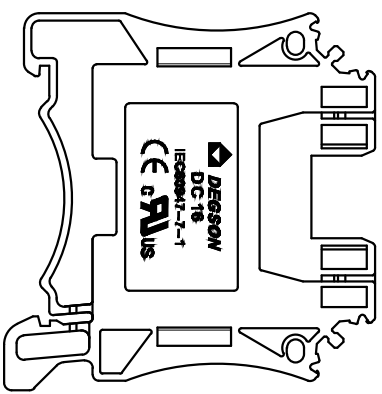
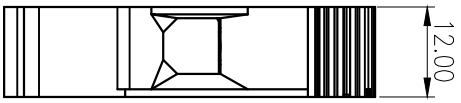
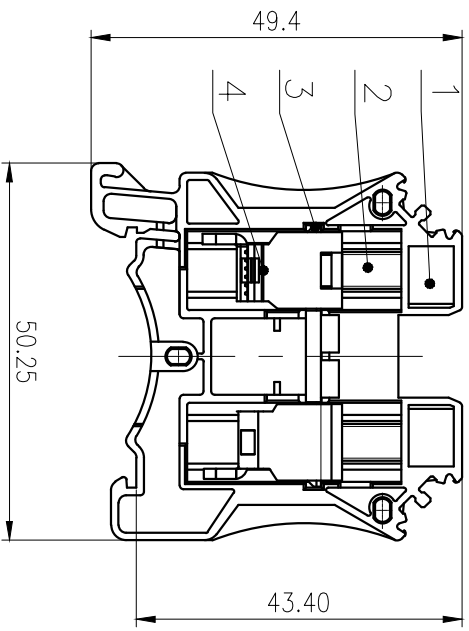
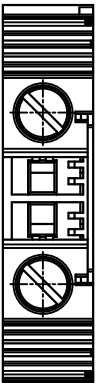
Marking strip	ZB10
Marker cards	DBE-1

#### Accessories

End cover	D-DC16
Bridge	DFA16
End clamp	E-WS
DIN rail	NS35/7.5-1000-00A(H)

#### Business data

Order number	11020000012
Packing unit	20
Minimum order quantity	20
Products weight (without packaging)	25.974



General tolerances(mm)													
0	>3	>6	>10	>18	>30	>50	>80	>120	>180	>250	>315	>400	0.1/10
~	~	~	~	~	~	~	~	~	~	~	~	~	
3	6	10	18	30	50	80	120	180	250	315	400	500	
±0.12	±0.18	±0.22	±0.26	±0.31	±0.37	±0.57	±0.80	±0.93	±1.05	±1.15	±1.60	±2.20	±2.50

ITEM	NAME OF PART	MATERIAL	NOTES
4	Cage	Steel	Zn Plated
3	Current carrier	Copper	Sn Plated
2	Screw	Steel	M5\Zn Plated
1	Housing	PA66	UL94V-0

REV	ECN	DESCRIPTION	DRAFT	DATE

MATERIAL:	/	MATERIAL:	/
MAT NO.:	/	NAME:	<b>DEGSON®</b> <b>DEGSON Germany GmbH</b>
STATUS:	/	DRAWING NO.:	DC16-C01
APPD: L: GL 2020.05.25		SCALE:	1:1
CHKD: Mao J 2020.05.25		TYPE:	CUSTOMER DRAWING
DRT:Wang LX 2020.05.25		REV	TO-2
		SHEET	1/1

UL Standard:	B	C	D
Rated Voltage(V)/Current(A)	600/100	600/100	600/5
IEC Standard:			
Overvoltage Category/ Pollution Degree	III/3	/	/
Rated Voltage(V)/Current(A)	1000/76	/	/
Rate Impulse Voltage(KV)	8.0	/	/
Torque Tightening(N·m/Lb.in)	M5, 2.5/27		
Wire Range(rigid and flexible)(mm² /AWG)	1.5~25/14~3		
Pitch(mm)	12.0		
Striping length(mm)	12-13		
Operating Temperature(°C)	-40~+105		
Conform to RoHS	Yes		
Standard color number:	/		
PANTONE / RAL	/		
SURFACE:	/		