

## Overview

### Product information



## DC35-11020000029

Screw type Din-Rail TB, Rated voltage : 1000 V, Rated current: 125 A, connector method: Screw/plug-in connector, Number of connectors: 2, Number of potentials: 1, Cross section: 2.5 mm<sup>2</sup> - 50 mm<sup>2</sup>, AWG: 14 - 10, Width: 16 mm, Height: 59.9mm, Color: gray, Mounting type: NS 35/7,5, NS 35/15

### Product advantages

- Steel screw connection technology, reliable connection
- Equipped with dual-channel bridge wells, circuit connection testing is more flexible
- Unique plug-in bridge, high circuit connection efficiency
- The box has a baffle to prevent mis-insertion
- Can be matched with marker strips to avoid incorrect insertion of wires

### Product certification



## Technical data

### Product drawing

### 3D model

□

### Wiring data

|                                      |                       |
|--------------------------------------|-----------------------|
| Strip length                         | 14~16mm               |
| Conductor cross section solid        | 2.5~50mm <sup>2</sup> |
| Conductor cross section flexible     | 2.5~50mm <sup>2</sup> |
| Conductor cross section flexible AWG | 14~1/0                |
| Conductor cross section solid AWG    | 14~10                 |
| screw thread                         | M6                    |
| Tightening torque                    | 3.5N.m                |

## Environmental conditions

|   |   |
|---|---|
| Ambient temperature (operation)           | -40 °C ~ 105 °C (depending on derating curve) |
| Ambient temperature (storage / transport) | -5 °C ~ 70 °C                                 |
| Ambient temperature (assembly)            | -5 °C ~ 70 °C                                 |
| Ambient temperature (execution)           | -5 °C ~ 70 °C                                 |
| Relative humidity (storage/transport)     | 25%~75%                                       |

## UL Electrical parameters

|                             |        |
|-----------------------------|--------|
| standard test               | UL1059 |
| Rated voltage (Use Group B) | 600V   |
| Rated current (Use Group B) | 150A   |
| Rated voltage (Use Group C) | 600V   |
| Rated current (Use Group C) | 150A   |
| Rated voltage (Use Group D) | 600V   |
| Rated current (Use Group D) | 5A     |

## IEC Electrical parameters

|                           |              |
|---------------------------|--------------|
| standard test             | IEC60947-7-1 |
| Pollution level           | 3            |
| Overvoltage level         | III          |
| Insulating material group | I            |
| Rated voltage (III / 3)   | 1000V        |
| Rated current (III / 3)   | 125A         |
| Rated surge voltage       | 8KV          |

## Safety test

|                   |      |
|-------------------|------|
| Anti-finger touch | IP20 |
|-------------------|------|

## Mechanical performance test

|   |                           |
|---|---------------------------|
| Mechanical performance test                             | Passed the test           |
| Bending test rotation speed                             | 10rpm                     |
| Bending test  | 135                       |
| Bend test lead cross section/weight                     | 2.5mm <sup>2</sup> /0.7kg |
|   | 35mm <sup>2</sup> /6.8kg  |
| Tensile test results                                    | Passed the test           |
| Conductor cross-section tensile test/set point traction | 2.5mm <sup>2</sup> /50N   |
|   | 35mm <sup>2</sup> /190N   |

#### Environmental protection

|            |                                 |
|------------|---------------------------------|
| REACH SVHC | Lead 7439-92-1                  |
| RoHS       | No excessive harmful substances |

#### Electrical performance test

|                              |                 |
|------------------------------|-----------------|
| Requirement, voltage drop    | ≤3.2mV          |
| Voltage drop test results    | Passed the test |
| Temperature rise test result | Passed the test |

#### Dimension

|                  |        |
|------------------|--------|
| NS 35/7,5 Height | 61.3mm |
| NS 35/15 Height  | 68.8mm |
| length           | 55.4mm |
| Height           | 59.9mm |

#### Overview

|                       |                  |
|-----------------------|------------------|
| Connection method     | screw connection |
| Number of positions   | 1                |
| Number of rows        | 1                |
| number of connections | 2                |

|   |   |
|---|---|
| electric potentials                       | 1   |
| Open-end side panels                      | no  |
| Insulation Materials                      | PA  |
| Flame retardant grade, in line with UL 94 | V0  |
| Application field                         | Railway industry, mechanical engineering, factory engineering, process industry, etc. |
| color                                     | Gray  |

#### Accessories

##### Marking & Installation

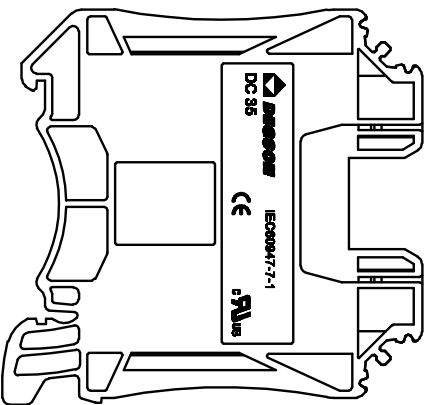
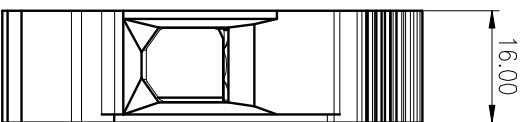
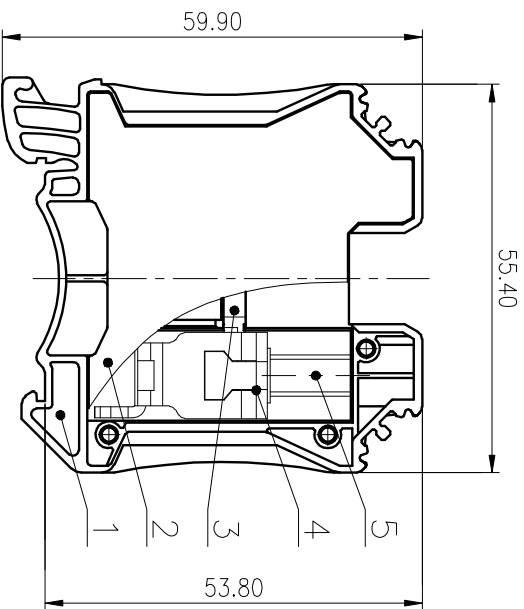
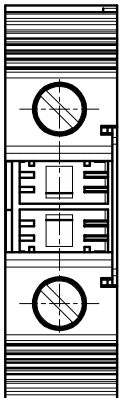
|               |       |
|---------------|-------|
| Marking strip | ZB10  |
| Marker cards  | DBE-1 |

##### Accessories

|           |                      |
|-----------|----------------------|
| Bridge    | DFA35                |
| End clamp | E-WS                 |
| DIN rail  | NS35/7.5-1000-00A(H) |

#### Business data

|                                     |             |
|-------------------------------------|-------------|
| Order number                        | 11020000029 |
| Packing unit                        | 25          |
| Minimum order quantity              | 25          |
| Products weight (without packaging) | 49.2        |



| General tolerances(mm) |             |
|------------------------|-------------|
| 0                      | >3          |
| 3                      | ~ 10        |
| 6                      | ~ 18        |
| H0.12/H0.18            | H0.22/H0.26 |
|                        | H0.31/H0.37 |
|                        | H0.57/H0.80 |
|                        | H0.93/H1.05 |
|                        | H1.15/H1.60 |
|                        | H2.20/H2.50 |
|                        | 0.1/1.0     |
|                        | EP          |

|  |                    |         |       |
|--|--------------------|---------|-------|
| UL Standard:   | B                  | C       | D     |
| Rated Voltage(V)/Current(A)                          | 600/150            | 600/150 | 600/5 |
| IEC Standard:  |                    |         |       |
| Overvoltage Category                                 | III/3              | /       | /     |
| Pollution Degree                                     |                    |         |       |
| Rated Voltage(V)/Current(A)                          | 1000/125           | /       | /     |
| Rate Impulse Voltage(kV)                             | 8.0                | /       | /     |
| Torque Tightening(N*m/Lb.in)                         | M6: 3.5/31         |         |       |
| Wire Range(rigid and flexible)(mm <sup>2</sup> /AWG) | 2.5~50/14~1/0(Str) |         |       |
| Pitch(mm)  | 14~10(5ø)          |         |       |
| Stripping length(mm)                                 | 16.0               |         |       |
| Operating temperature(°C)                            | -40~+105           |         |       |
| Conform to RoHS                                      | Yes                |         |       |
| Standard color number:                               |                    |         |       |
| PANTONE / RAL  |                    |         |       |

MATERIAL: / SURFACE: /

MAT NO.: /  
 STATUS: /  
 APPD: LJ GL 2020.05.25  
 CHKD: Moo J 2020.05.25  
 DRT:Wang LX 2020.05.25

**DEGSON® DEGSON GERMANY GmbH**

NAME: DC35-01P-1Y-00A(H)

DRAWING NO.: DC35-C01  
 TYPE: CUSTOMER DRAWING  
 SCALE: 1:1

| ITEM | NAME OF PART    | MATERIAL | NOTES        |
|------|-----------------|----------|--------------|
| 1    | Housing         | PA66     | UL94V-0      |
| 2    | Cover           | PA66     | UL94V-0      |
| 3    | Current carrier | Copper   | Sn Plated    |
| 4    | Cage            | Steel    | Zn Plated    |
| 5    | Screw           | Steel    | M6\Zn Plated |

| REV | EON | DESCRIPTION | DRT | DATE |
|-----|-----|-------------|-----|------|
| 1   |     |             |     |      |

| REV  | SHEET |
|------|-------|
| TO-2 | 1/1   |