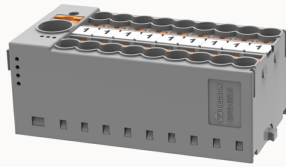


Overview

Product information

**DPD6/2.5-18P-11-00(Z)-11040001320**

Direct insertion connection, rated voltage: 690V, rated current: 24A, connection quantity: 19, wiring capacity: 0.14-2.5mm² (load), 0.5mm²~10mm² (main line), AWG: 26~12 (load), 20AWG~8AWG (main line), width: 28.6mm, color: gray, installation method: NS35/15

Product advantages

- ☒ Flexible splicing and bridging design
- ☒ Unique heat dissipation structure
- ☒ Universal installation method, suitable for various occasions
- ☒ Snap on identification structure, quick and stable installation

Product certification

Technical data

Product drawing

3D model

☐

Overview

Connection method	Push in connection
Number of rows	1
number of connections	19
Open-end side panels	no
Insulation Materials	PA
Flame retardant grade, in line with UL 94	V0
Insulating material group	I
standard test	IEC60947-7-1

Dimension

width	28.6mm
Height	57.05mm
NS 35/7,5 Height	32.1mm
	39.7mm
Depth	22.35mm

Wiring data

Strip length	Power in:12mm~14mm,load:10mm~12mm
Conductor cross section solid AWG	Power in:20AWG~8AWG,load:26AWG~12AWG
Conductor cross section solid	Power in:0.5mm ² ~10mm ² ,load:0.14mm ² ~4mm ²
Conductor cross section flexible	Power in:0.5mm ² ~10mm ² ,load:0.14mm ² ~2.5mm ²
Conductor cross section flexible (ferrule without plastic sleeve)	Power in:0.5mm ² ~6mm ² ,load:0.14mm ² ~2.5mm ²
Conductor cross section flexible (ferrule with plastic sleeve)	Power in:0.5mm ² ~6mm ² ,load:0.14mm ² ~2.5mm ²
2 flexible conductors with a TWIN ferrule	Power in:0.5mm ² ~1.5mm ² ,load:/

IEC Electrical parameters

Rated voltage(III/3)	690V
Rated current(III/3)	Power in:41A,load:24A

IEC Electrical parameters

Rated surge voltage	8KV
---------------------	-----

Environmental conditions

Ambient temperature (operation)	-40 °C ~ 105 °C (depending on derating curve)
Relative humidity (storage/transport)	25%~75%
Ambient temperature (storage / transport)	-25°C~60°C

Mechanical performance test

Rotational Pull Test	Passed the test
----------------------	-----------------

Electrical performance test

Temperature rise test result	Passed the test
------------------------------	-----------------

Environmental protection

RoHS	No excessive harmful substances
REACH SVHC	Lead 7439-92-1

Accessories

Accessories

Same direction installation rail adapter	DPD-NS35A
Vertical installation rail adapter	DPD-NS15/35
Panel installation adapter	DPD-F
Identification cards	ZSF5
Bridge components	DFBSXX-5.2

Business data

Order number	11040001320
Packing unit	
Minimum order quantity	
Products weight (without packaging)	