

Product information

DGD125-01P-11-00(Z)-30110000047

Screw connection, rated voltage: 690V, rated current: 125A, connection capacity: 1, wiring capacity: incoming line (10-35) mm², outgoing line (2.5-16) mm², width: 28mm, color: gray, installation method: NS35/15

Product advantages

- Compact design
- Multi potential distribution
- Easy installation

Product certification

TECHNICAL DATA

Overview

Number of rows	1
Insulation Materials	PA
Flame retardant grade, in line with UL 94	V0
Insulating material group	I
standard test	IEC60947-7-1
Connection method	screw connection

Dimension

width	28mm
Height	48mm
NS 35/7,5 Height	49.2mm
NS 35/15 Height	56.7mm

Wiring data

Conductor cross section solid	Input:(10-35)mm ² Output:(2.5-16)mm ²
Conductor cross section flexible	Input:(10-35)mm ² Output:(2.5-16)mm ²
Conductor cross section flexible (ferrule without plastic sleeve)	Input:(10-35)mm ² Output:(2.5-16)mm ²
Conductor cross section flexible (ferrule with plastic sleeve)	Input:(10-35)mm ² Output:(2.5-16)mm ²
2 flexible conductors with a TWIN ferrule	Input:(10-35)mm ² Output:(2.5-16)mm ²

IEC Electrical parameters

Rated surge voltage	3V
Rated voltage(III/3)	690V

IEC Electrical parameters

Rated current (III / 3)	125A
--------------------------------	------

Environmental conditions

Ambient temperature (operation)	-40 °C ~ 85 °C
--	----------------

Mechanical performance test

Mechanical strength	Passed the test
Fixing support	Passed the test
Rotational Pull Test	Passed the test

Electrical performance test

Voltage drop	≤3.2mV
Temperature rise test	≤45 K

Environmental protection

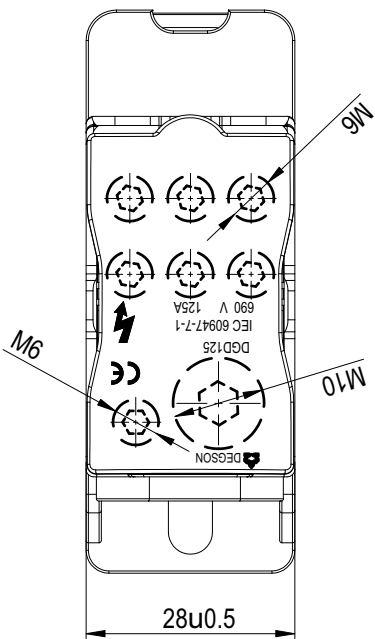
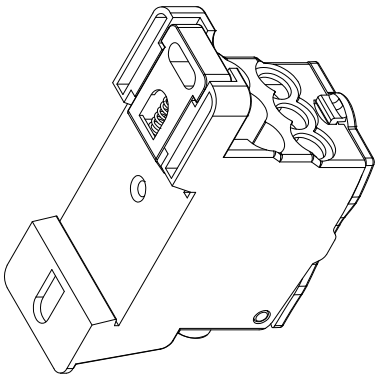
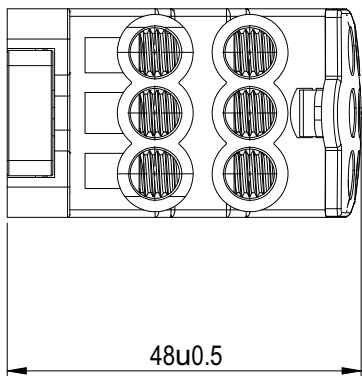
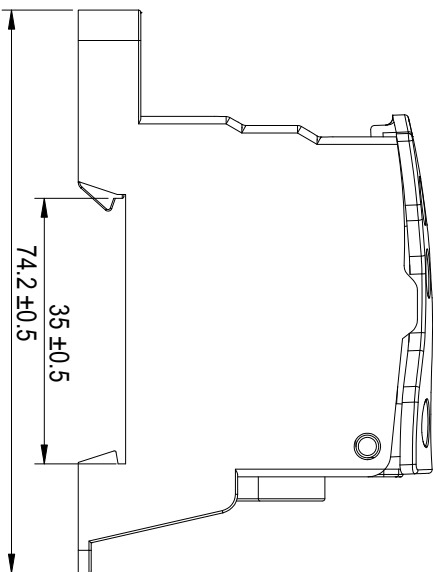
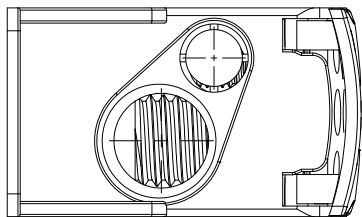
RoHS	No excessive harmful substances
-------------	---------------------------------

Electrical parameters

Strip length	9.0mm
---------------------	-------

BUSINESS DATA

Order number	30110000047
Packing unit	
Minimum order quantity	
Products weight (without packaging)	



General Tolerances(mm)	
0	>3
~	>6
3	~6
~	10
~	18
~	30
~	50
~	80
~	120
~	180
~	250
~	315
~	>400
~	>5
~	0
~	±2.50
~	±2°

REV	ECN	DESCRIPTION	DRAFT	DATE
00		New Product		2024.06.05



MATERIAL:	SURFACE/COLOR:
MAT NO./REV: 30110000047-1 / 01	MAT STATUS:
NAME	

APP	2024.06.05	DRAWING NO.	DGD125-01P-11-00A(H)
D:	2024.06.05	TYPE	CUSTOMER DRAWING
CHK	2024.06.05	DRAWING STATUS	2.1
		SCALE	1/1

DRF	A4	DATE	2024.06.05
DRF		DATE	

1 2 3 4 5 6

D

C

B

A