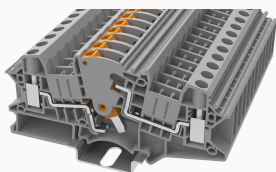


Product information

DHVME6-1109000025

Screw rail terminal, wiring method: screw type connection, rated voltage: 500 V, rated current: 30 A, connection quantity: 2, number of digits: 1, wiring capacity: 0.2 mm² -6 mm², AWG: 24-10, width: 8.2 mm, color: gray, installation method: NS 35/7.5, NS 35/15

Product advantages

- Rated voltage in kilovolts
- Screw self-locking technology, superior anti loosening performance
- Copper alloy material with excellent conductivity
- 45 ° large area marking, easy to identify marking area

Product certification

TECHNICAL DATA

Overview

Number of rows	1
number of connections	2
Open-end side panels	Yes
Insulation Materials	PA
Flame retardant grade, in line with UL 94	V0
Insulating material group	I
standard test	IEC60947-7-1
Connection method	screw connection

Dimension

width	8.2mm
End plate width	1.5mm
Height	42.45mm

NS 35/7,5 Height	49.95mm
NS 35/15 Height	57.45mm
length	102.08mm

Wiring data

Strip length	9~10mm
Conductor cross section solid AWG	24~10
Conductor cross section solid	0.2~6mm ²
Conductor cross section flexible	0.2~6mm ²

IEC Electrical parameters

Rated current	30A
----------------------	-----

IEC Electrical parameters

Rated voltage (III / 3)	500V
Rated surge voltage	6KV

UL Electrical parameters

Rated voltage	300V
Rated current	30A

Environmental conditions

Ambient temperature (operation)	-40 °C ~ 105 °C (depending on derating curve)
Relative humidity (storage/transport)	25%~75%
Ambient temperature (storage / transport)	-25°C~60°C

Mechanical performance test

Mechanical strength	Passed the test
Fixing support	Passed the test
Rotational Pull Test	Passed the test

Electrical performance test

Voltage drop	≤3.2mV
Temperature rise test	≤45 K

Safety test

Anti-finger touch	Passed the test
-------------------	-----------------

Environmental protection

RoHS	No excessive harmful substances
REACH SVHC	Lead 7439-92-1

ACCESSORIES

Marker

Top marker bar	/
Side marking strip	/

Accessories

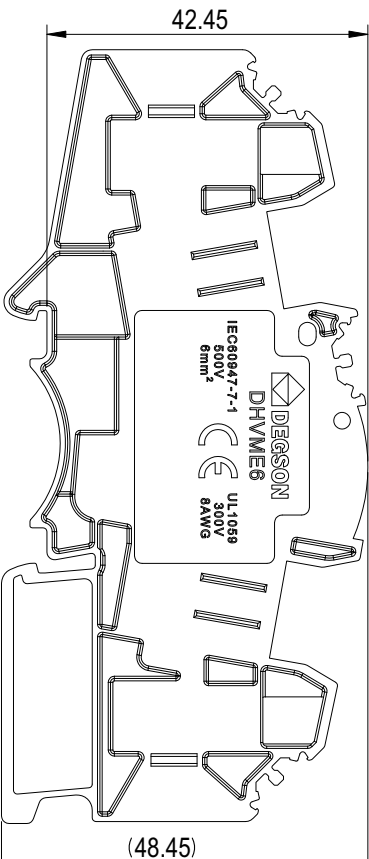
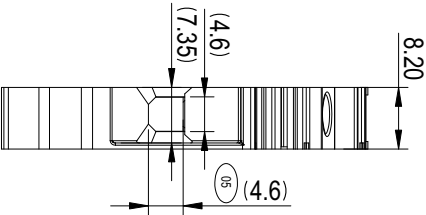
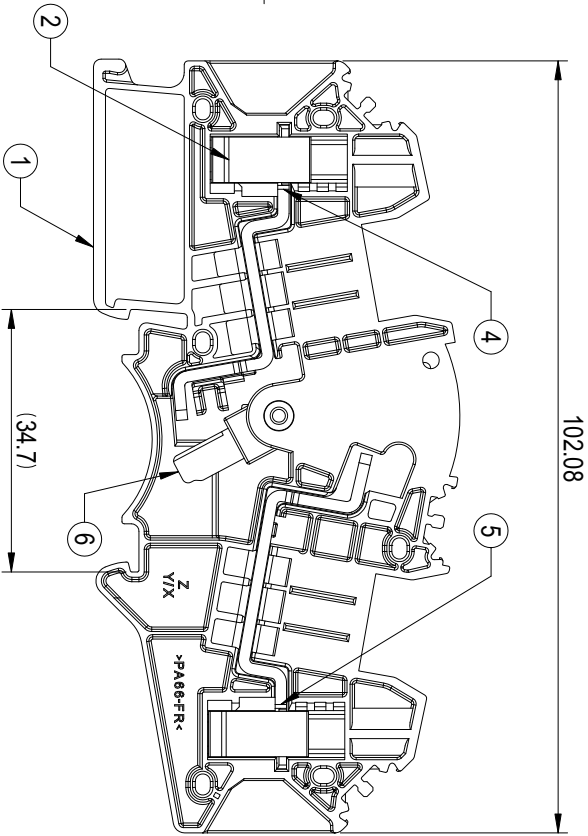
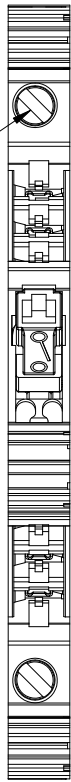
A screwdriver	0.8x4.0
Bridge components	/
End plate	D-DHVME6
Grouping partition	ATP-DS / ATP-PC N

Installation

Terminal fixing components	E-PC 1100A / E-WS N
Terminal strip marking bracket	DLM2 / KLM3-20x8 / KLM3-44x8
DIN rail	NS35/7.5-1000-00A(H)
Guide rail protection cover	AP3-COVER / AP3-T / AP3-T-KS

BUSINESS DATA

Order number	11090000025
Packing unit	20
Minimum order quantity	20
Products weight (without packaging)	30.28



General tolerances(mm)												0.05/10	
0	>3	>5	>10	>18	>30	>50	>80	>120	>180	>250	>315	>400	>500
3	~6	~10	~18	~30	~50	~80	~120	~180	~250	~315	~400	~500	~1°
+0.08	+0.12	+0.18	+0.22	+0.26	+0.31	+0.37	+0.57	+0.80	+0.93	+1.05	+1.15	+1.60	+2.20
UL Standard:		BOD										±1°	
Rated Voltage(V)/Current(A)		300/30										300/30	
IEC Standard:		III/3										III/2	
Overvoltage Category/Pollution Degree		500/30										/	
Rated Voltage(V)/Current(A)		6/1										/	
Rate Impulse Voltage(kV)		M4_1.5~1.8/13.28~15.94										24~10 / 0.2~6.0	
Torque Tightening(N·mLb in)		8AW G1/0mm²										8.2N=0TP	
Wire Range(rigid and flexible)(AWG/mm²)		Pitch(in m)/Poles										8.2N=0TP	
Pitch(in m)/Poles		Stripping length(mm)										10~11	
Stripping length(mm)		Ambient temperature (operation)(°C)										-60~+105	
Ambient temperature (operation)(°C)		Conform to RoHS										Yes	

ITEM	NAME OF PART	MATERIAL	NOTES
6	Switch	PA66+Copper Alloy	UL94 V-0-Sn Plated
5	Current_Carrier_Right	Copper Alloy	Sn Plated
4	Current_Carrier_Left	Copper Alloy	Sn Plated
3	Screw	Brass	M4 Ni Plated
2	Cage	Brass	Ni Plated
1	Housing	PA66	UL94 V-0

DEGSON
 MATERIAL: SURFACE/COLOR:
 MAT NO./REV: 11090000025-1 / 00.01 MAT STATUS:

APPD	PENG M	2024.08.27	NAME	DHVMIE6-01P-11-00Z(H)
CHKD	GAO WG <td>2024.08.27 <td></td> <td></td> </td>	2024.08.27 <td></td> <td></td>		
DRFT	LIU Y <td>2024.08.27 <td></td> <td></td> </td>	2024.08.27 <td></td> <td></td>		
DRAWING NO.	200256830		TYPE	CUSTOMER DRAWING
DRAWING STATUS			SCALE	1:1
SHEET				1/1

REV	DESCRIPTION	DATE
05 <td>Redimension 1 feature. <td>2024.08.27 </td></td>	Redimension 1 feature. <td>2024.08.27 </td>	2024.08.27
ECN <td> <td> </td></td>	<td> </td>	